

FIGURE:2a Proposed DPT Boring Sample Locations
South Street Property
 3348 South Street
 Fort Myers, Lee County, Florida



GFA Project No.: 17-5281.00
 Drawn By: SM; Date: 7/12/17
 Source: GoogleEarth, 2/3/17
 Revised: 7/28/17
 Approximate Scale 1"= 60'

LEGEND:

- Proposed DPT Boring Sample Location
- Approximate Excavated Area (Per 1958 UF Imagery)
- - - Approximate City Property Boundary
- Approximate Site Boundary

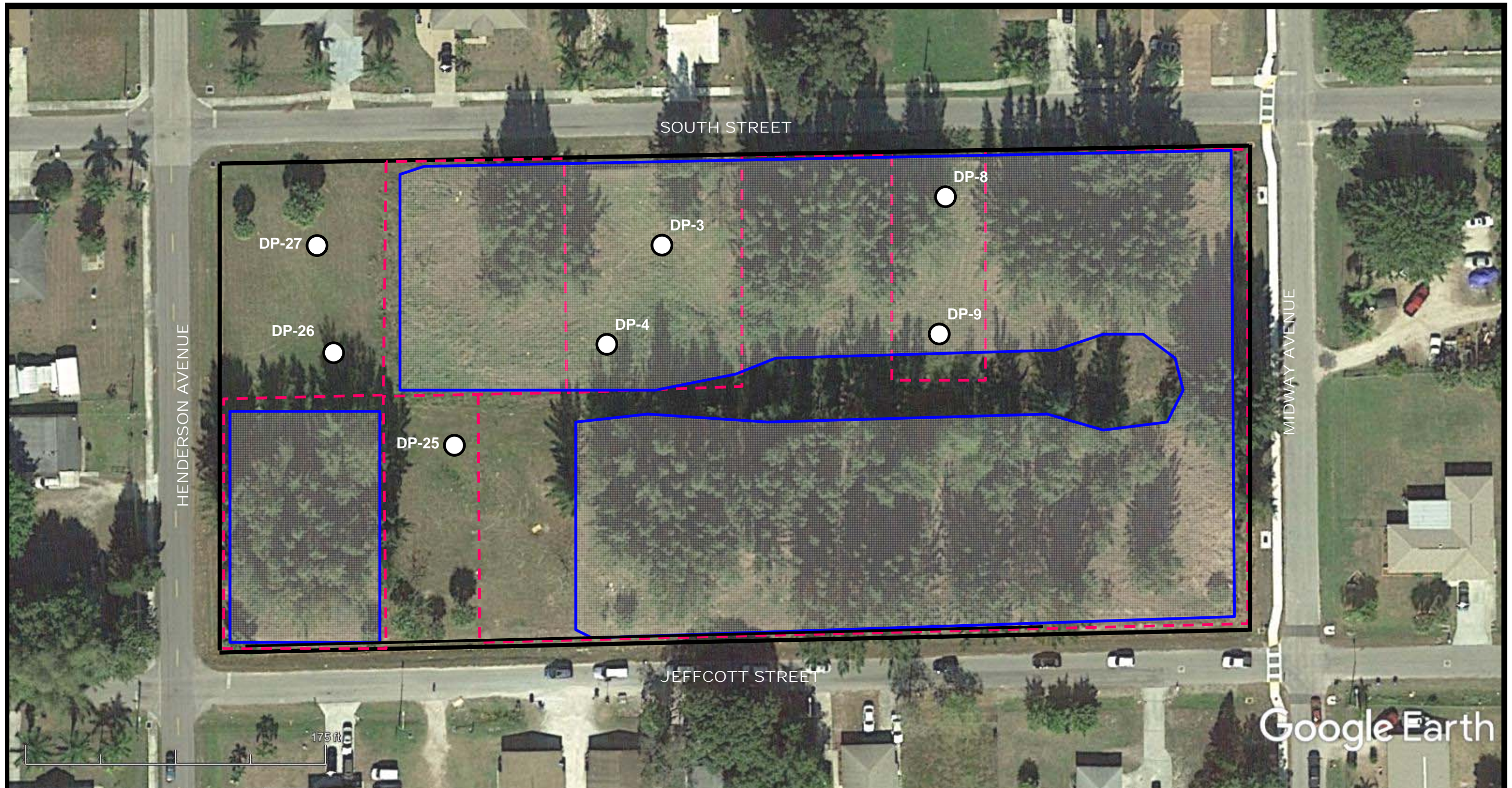


FIGURE:2b Proposed Private Property DPT Sample Locations

South Street Property
 3348 South Street
 Fort Myers, Lee County, Florida



GFA Project No.: 17-5281.00
 Drawn By: SM; Date: 7/12/17
 Source: GoogleEarth, 2/3/17
 Revised: 7/25/17
 Approximate Scale 1"= 60'

LEGEND:

- Proposed Private Property DPT Boring*
- Approximate Excavated Area (Per 1958 UF Imagery)
- - - Approximate City Property Boundary
- Approximate Site Boundary

*Private Property Borings Will Require Property Owners Approval

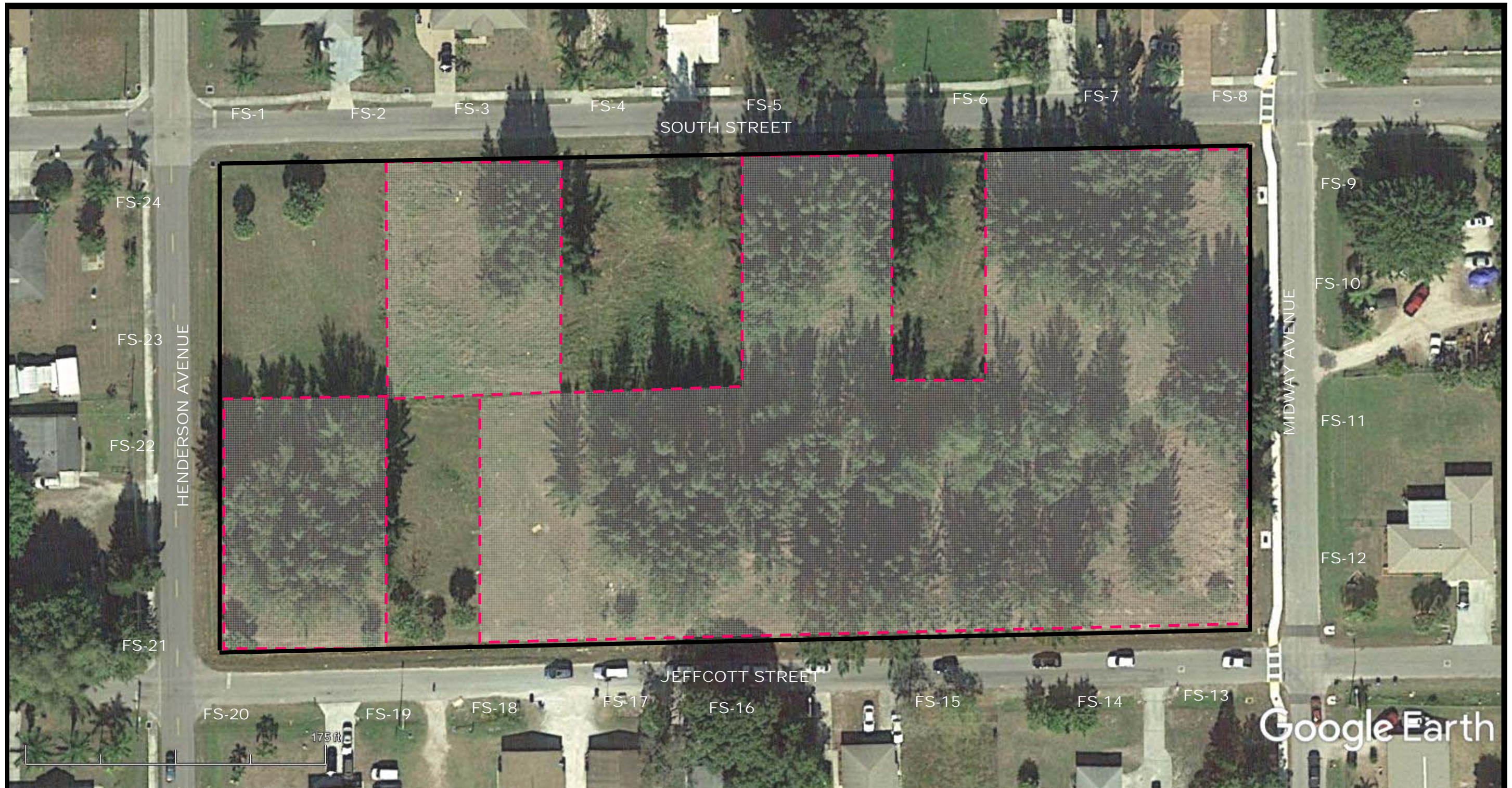


FIGURE:3b Proposed Off-Site Soil Sample Locations
South Street Property
 3348 South Street
 Fort Myers, Lee County, Florida



GFA Project No.: 17-5281.00
 Drawn By: SM; Date: 7/12/17
 Revised: 7/28/17
 Source: GoogleEarth, 2/3/17
 Approximate Scale 1"= 60'

LEGEND:

FS = Proposed Off-site Soil Sample Location

— Approximate City Property Boundary

— Approximate Site Boundary

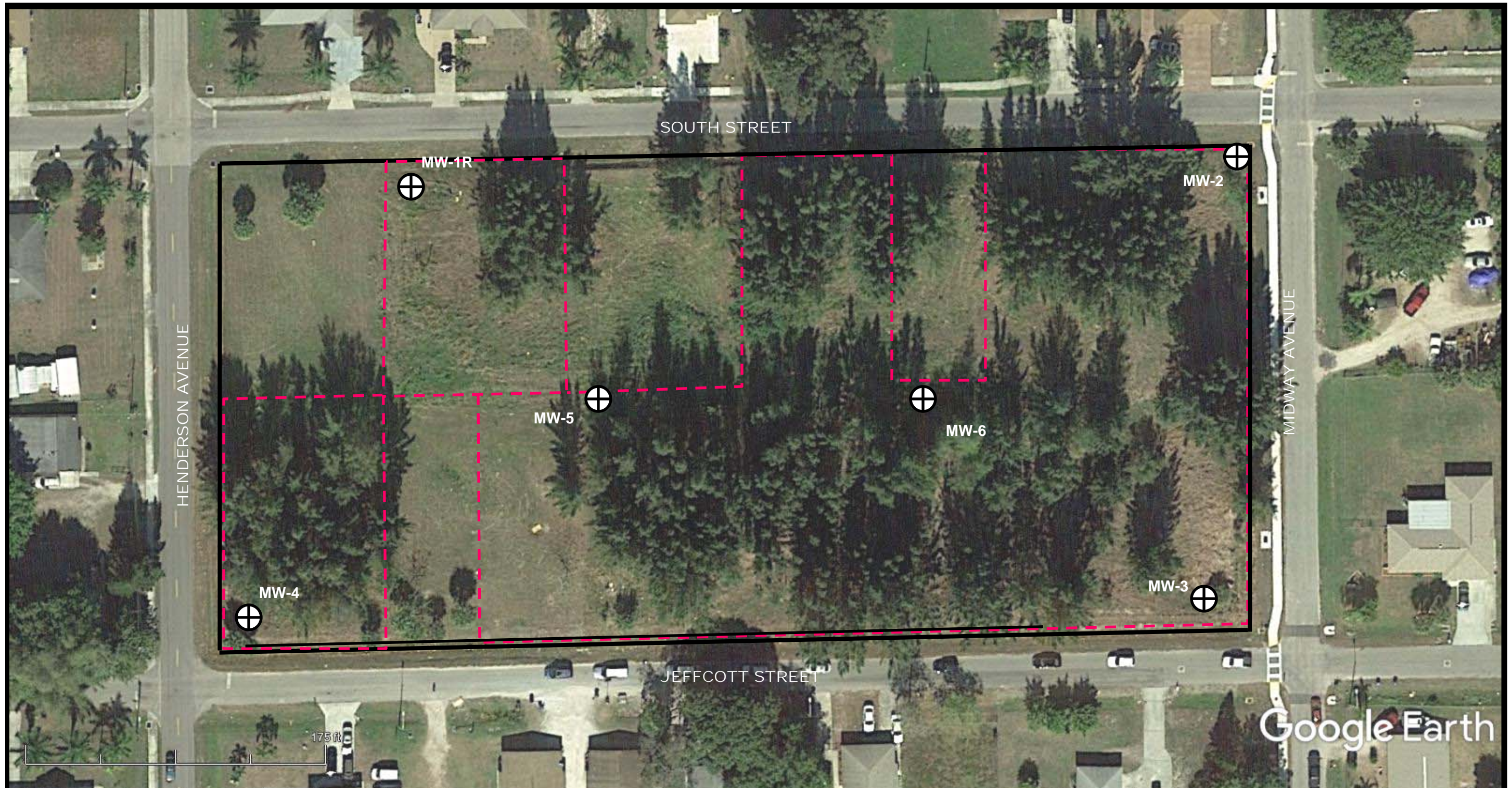


FIGURE 4a: Groundwater Sample Locations
South Street Property
 3348 South Street
 Fort Myers, Lee County, Florida



GFA Project No.: 17-5281.00
 Drawn By: SM; Date: 7/28/17
 Source: GoogleEarth, 2/3/17
 Approximate Scale 1" = 60'

LEGEND:

Existing Monitoring Well Location

Approximate City Property Boundary
 Approximate Site Boundary

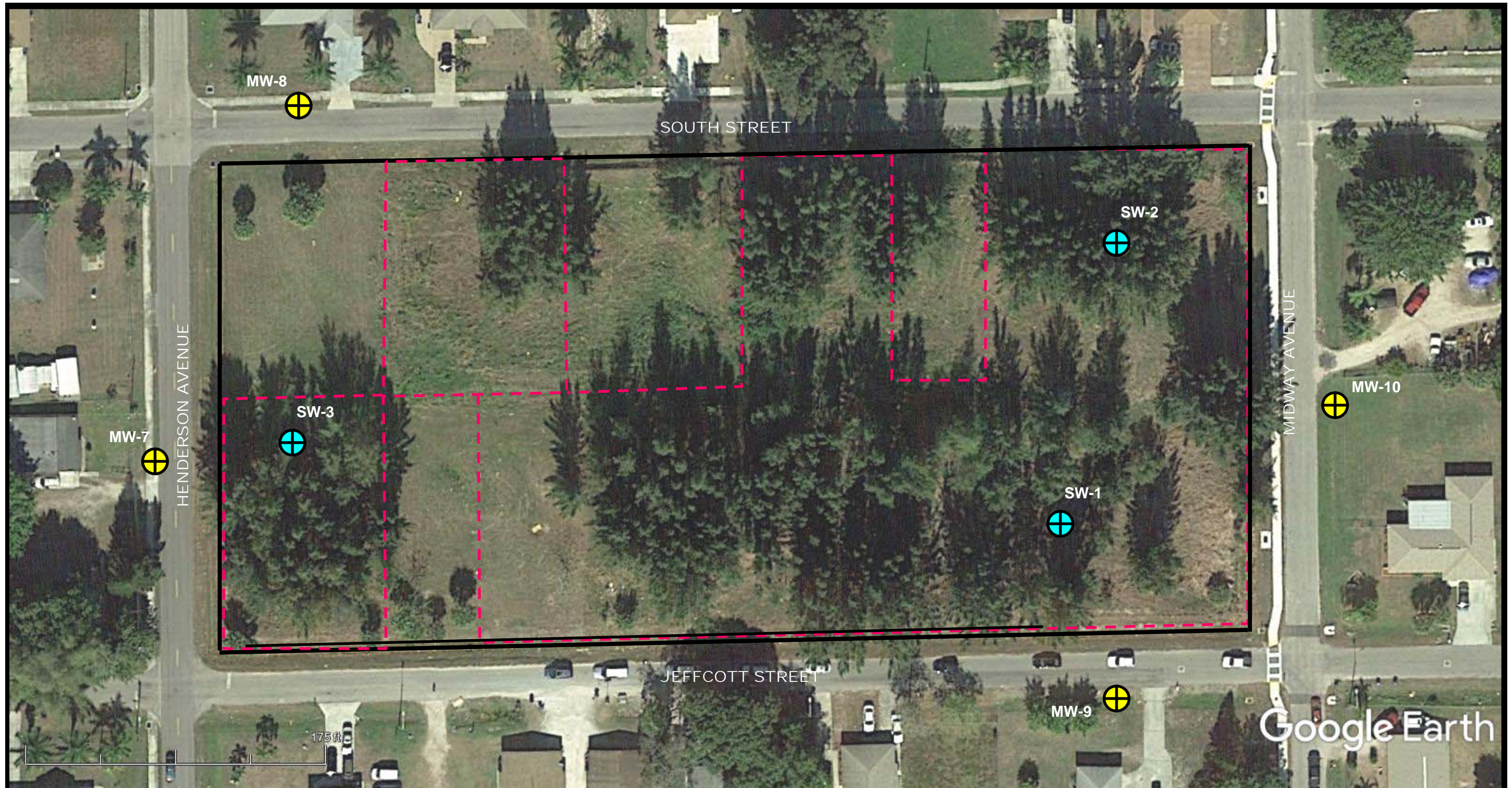


FIGURE:4b Proposed Surface Water and Off-Site Groundwater Sample Locations
South Street Property
 3348 South Street
 Fort Myers, Lee County, Florida



GFA Project No.: 17-5281.00
 Drawn By: SM; Date: 7/25/17
 Source: GoogleEarth, 2/3/17
 Revised: 7/28/17
 Approximate Scale 1"= 60'

LEGEND:



Proposed Off-Site Monitor Well Cluster



Approximate City Property Boundary



Approximate Site Boundary



Proposed Surfacewater Sample Location



FIGURE:3a Proposed On-Site Soil Sample Locations
South Street Property
 3348 South Street
 Fort Myers, Lee County, Florida



GFA Project No.: 17-5281.00
 Drawn By: SM; Date: 7/12/17
 Revised: 7/28/17
 Source: GoogleEarth, 2/3/17
 Approximate Scale 1"= 60'

LEGEND:

- HA = Proposed Onsite Soil Sample Location
- Approximate City Property Boundary
- 1/4 - Acre Exposure Unit
- Approximate Site Boundary

